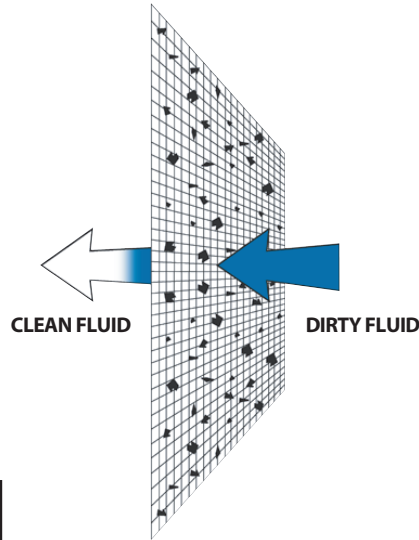


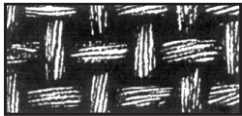
## Filter Data Sheet

### Standard Mesh Liquid Filter Bags Monofilament & Multifilament

- Micron ratings from 1 to 1500
- All industry standard and custom sizes available
- High flow/low pressure drop media
- Surface-retention filtration
- Wide chemical compatibility
- Sewn construction
- Handles standard on all bags
- Choice of steel or molded plastic snap seal rings
- Economical removal of non-deformable contaminants
- Non-fiber releasing
- Good removal efficiencies
- Temperature ratings to 400°F
- Polyester and nylon materials meet FDA regulations for contact under CFR21, section 177.1520
- Silicone-free construction



### Mesh Bag Materials



**Multifilament Mesh** media is woven from threads made of smaller fibers. Bags made from this material are low cost and disposable.



**Monofilament Mesh** is woven from single-fiber threads. The openings are square and uniform. Bags made from this material have excellent strength and some are cleanable.

### Mesh Bag Styles

S-ring bags have a galvanized steel ring (stainless steel optional) sewn into the top of the bag. They are supplied with sewn seams standard.

V-ring bags have a specially-designed, high-temperature snap-seal ring sewn into the top of the bag. They are supplied with sewn seams standard.

Mesh Materials	Micron Ratings																	
	1	5	10	25	50	75	100	125	150	175	200	250	300	400	600	800	1000	1500
Nylon Monofilament	•	•	•	•	•	•	•	•	•	•	•	•	•	•	•	•	•	•
Polyester Multifilament							•		•		•	•	•	•	•	•	•	•

### Ordering Information

G	Media Type	Micron Rating	Cover/Jacket	Bag Dimensions			Bag/Collar Style	Options
	NMO - Nylon Monofilament	1-1500	P=Plain (No Cover)	Size Symbol	Diam.	Length	S = Standard steel ring	NR=No ring
	PEMU - Polyester Multifilament			1 =	7.06"	16.5"	SS = Stainless steel ring	RC=Rev. collar (S +SS only)
	NMU - Nylon Multifilament			2 =	7.06"	32.0"	C = Comm. type snap steel band	EB=Edge binding
				3 =	4.12"	8.0"	V = High-temp plastic snap-seal	DS=Draw-string
				4 =	4.12"	14.0"		
				7 =	5.5"	15.0"		
				8 =	5.5"	20.0"		
				9 =	5.5"	31.0"		
				C1 =	7.31"	16.5"		
				C2 =	7.31"	32.5"		
				12 =	8.0"	30.0"		